

## SNAPSHOTS OF QUEBEC'S EASTERN TOWNSHIPS IN THE EARLY 20<sup>TH</sup> CENTURY: THE HERBERT DERICK COLLECTION

---

Jody Robinson, Archivist  
*Eastern Townships Resource Centre*

*Please enjoy this beautiful selection of postcards from the ETRC's Herbert Derick collection (P058).*

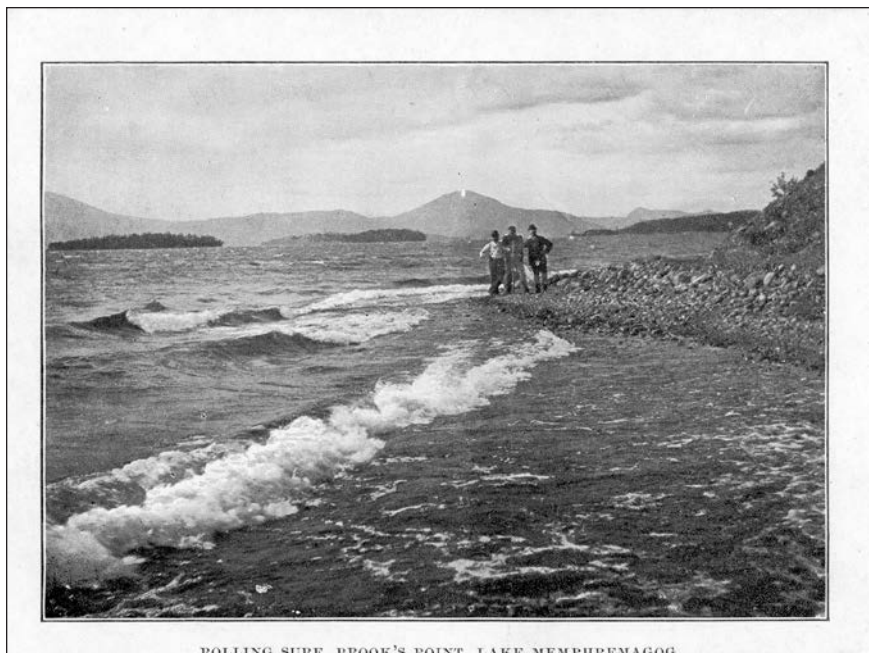
An avid local historian, Herbert Derick was mostly interested in early Eastern Townships pioneers and accumulated a large quantity of material in this field. As you will see, the Herbert Derick collection contains a nice variety of postcards from across the Historical Eastern Townships.

Before the days when everyone owned a camera, having photographs or images of your surroundings or the places you visited was quite special. By capturing images of rural and urban landscapes, postcards provided a wonderful and unique opportunity for people to have and share images of their surroundings, or the places they visited. For today's researcher, these postcards play a vital role in documenting an area's visual heritage. When considering the type of information that is possible to gather from examining these images, we are reminded that a picture is truly worth a thousand words.

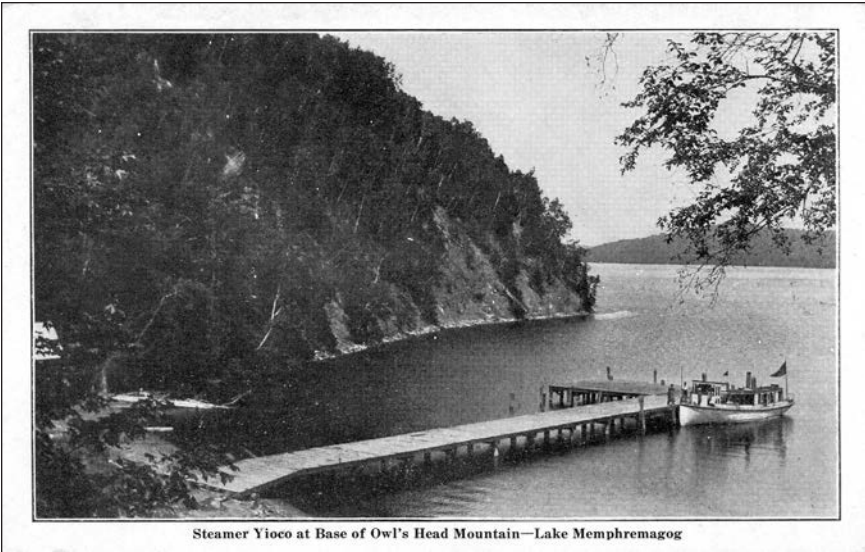
## Stanstead County



Casino at the Glen Villa Resort (built around 1902 by G.A. LeBaron) in North Hatley, ca. 1908. The postcard was addressed to Bernyce George in Mansonville. ETRC-P058-010\_017



Rolling surf at Brook's Point on Lake Memphremagog, ca. 1910. ETRC-P058-010\_016



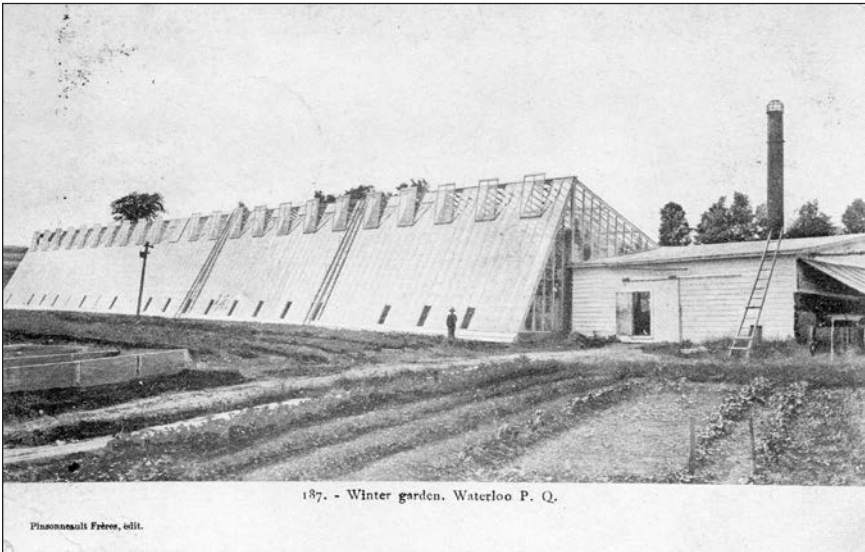
Steamer Yioco at Base of Owl's Head Mountain—Lake Memphremagog

Steamer Yioco at the base of Owl's Head Mount, Lake Memphremagog, ca. 1908. The postcard was addressed to Gladys Hyde in Clarenceville.  
ETRC-P058-010\_015



Kezar & Hunting's cement products manufacturing yard, Massawippi, ca. 1915. ETRC-P058-010\_006

## Shefford County



Winter gardens in Waterloo, ca. 1909. The postcard was addressed to William Abbott in Stanstead. ETRC-P058-010\_019



Views from Roxton Falls, including the Mill and Chair Manufacturing Company, ca. 1910. ETRC-P058-010\_018



## Brome County



Streetview in Mansonville, ca. 1910. A small "X" (arrow) can be seen on the second house on the left, where the sender of the postcard marked the place they were staying for the benefit of the postcard recipient, Helen Cutler of Manchester, New Hampshire. ETRC-P058-010\_014



View of Knowlton Academy with children gardening in the foreground, ca. 1908. The postcard was addressed to Mrs. Colby in Stanstead. ETRC-P058-010\_013

## Richmond County



Main Street in Richmond, looking South, ca. 1910.  
ETRC-P058-010\_012

## Frontenac County

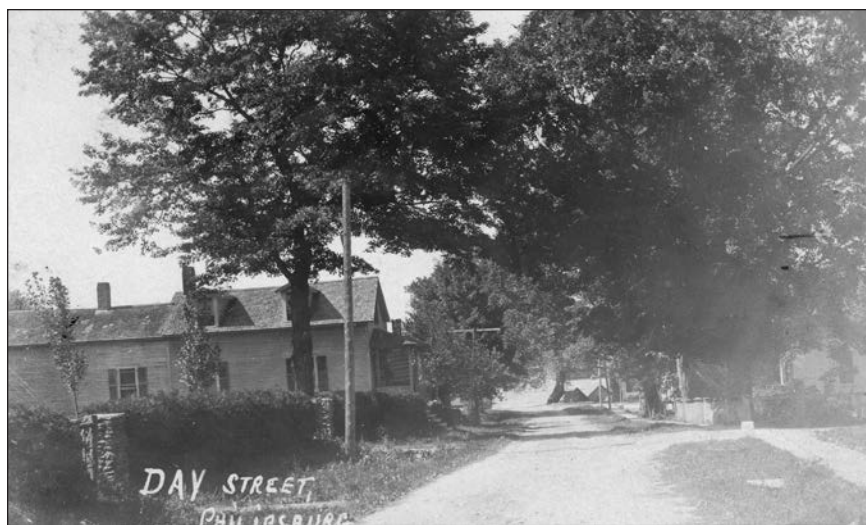


Streetview of Maple Avenue, now Frontenac Street, in Lake Megantic,  
ca. 1906. The postcard was addressed to Miss I.F. McDonald in Milan.  
ETRC-P058-010\_005

Missisquoi County

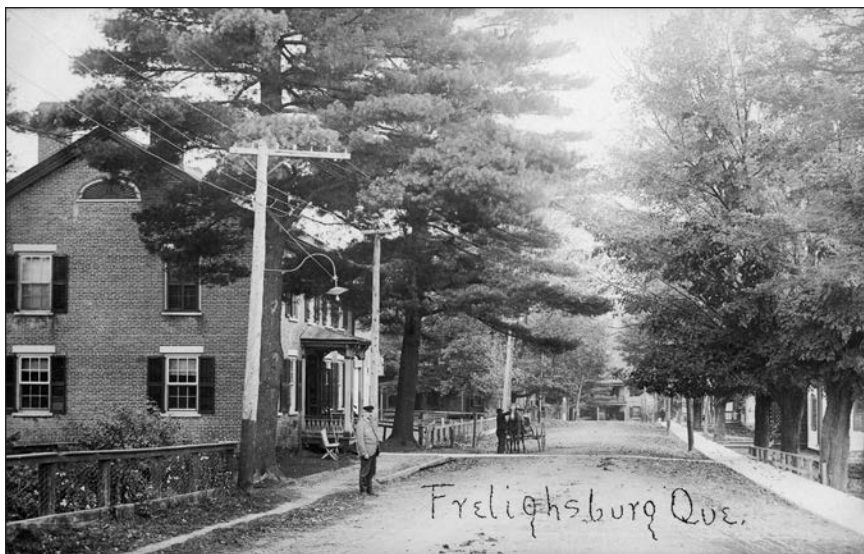


A.H. Derick's general store, Empire Hall and the Methodist Church in Clarenceville (now Saint-Georges-de-Clarenceville) between 1908 and 1911. ETRC-P058-010\_026

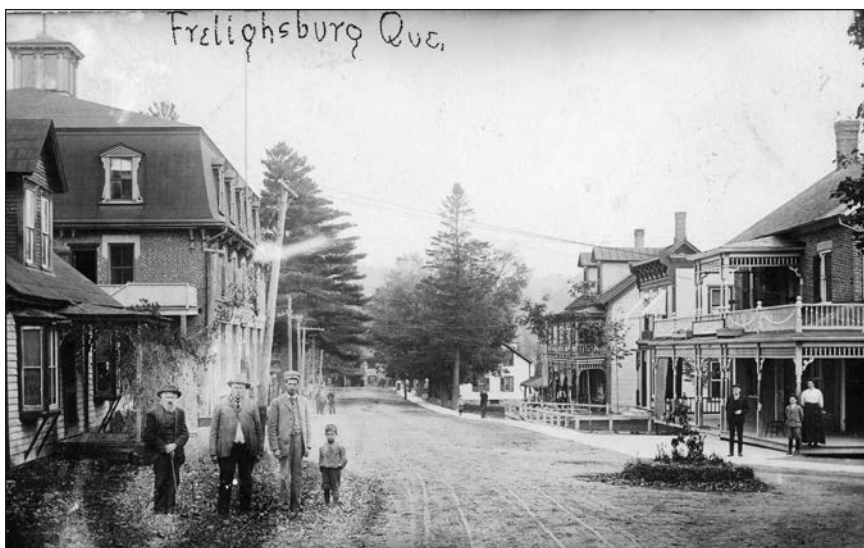


Day Street, Philipsburg, ca. 1910. The postcard was sent to Mildred Sager in Pigeon Hill from a friend. ETRC-P058-010\_025



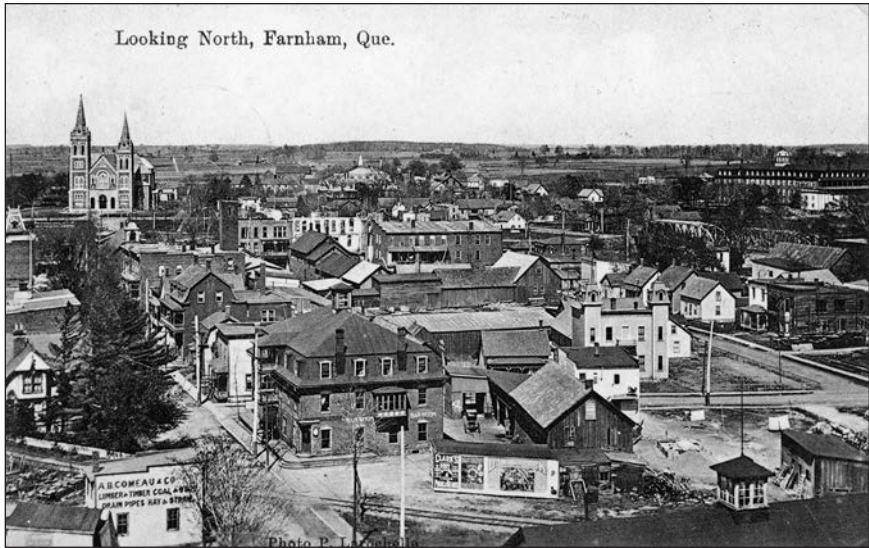


Frelighsburg, ca. 1915.  
ETRC-P058-010\_024



A streetview in Frelighsburg, with the American House Hotel  
pictured on the right, ca. 1914. ETRC-P058-010\_023

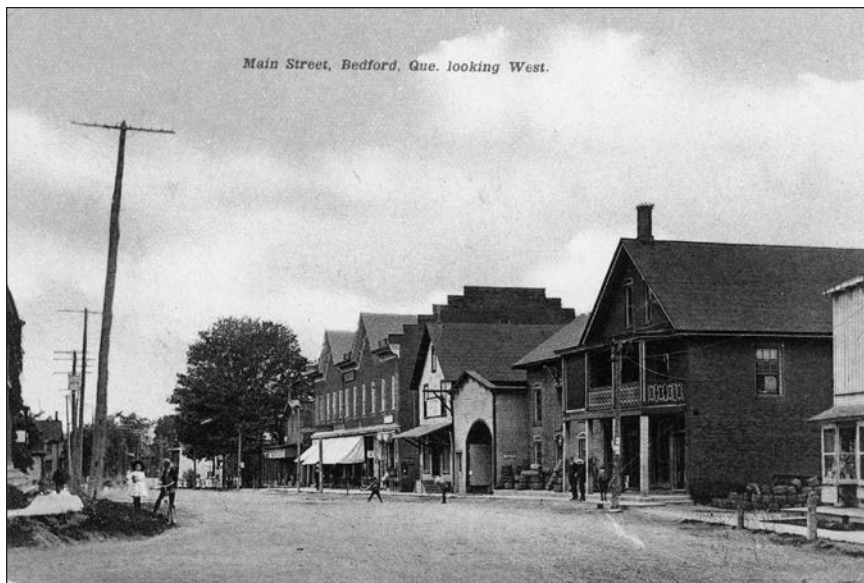




A view of Farnham, looking north, ca. 1913. Photo by P. Laroche.  
The postcard is addressed to Bernyce George in Mansonville.  
ETRC-P058-010\_022

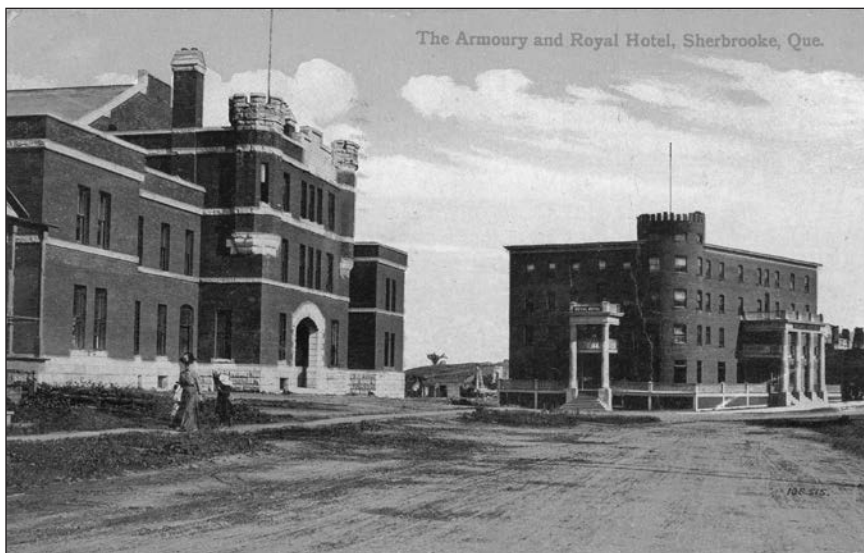


Small's Block in Dunham,  
ca. 1910.  
ETRC-P058-010\_021



Main Street in Bedford, looking West, ca. 1910. The postcard was addressed to Mrs. Stewart Simmons in Richford, Vermont.  
ETRC-P058-010\_020

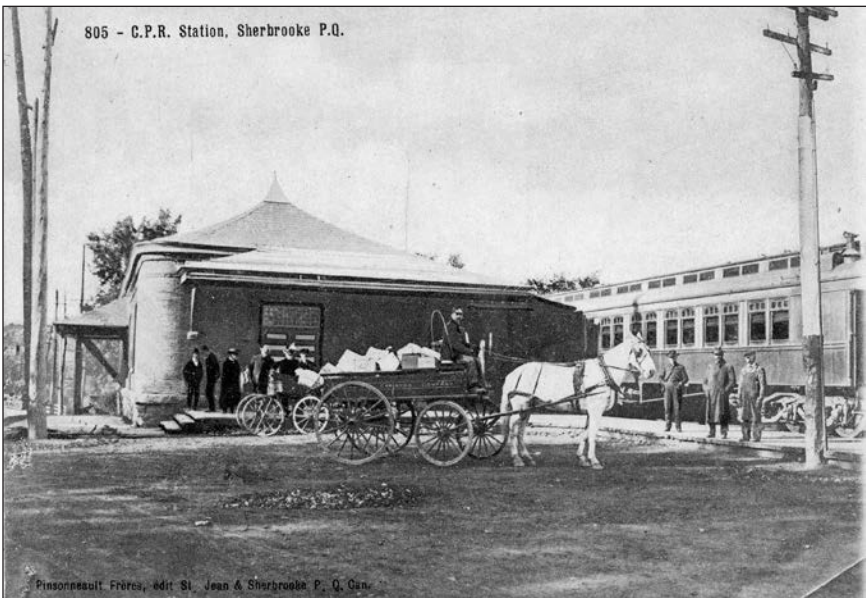
### Sherbrooke County



The Fusiliers de Sherbrooke Armoury and the Royal Hotel in Sherbrooke, ca. 1913. The postcard was addressed to Mrs. W.A. Abbott in Stanstead.  
ETRC-P058-010\_011

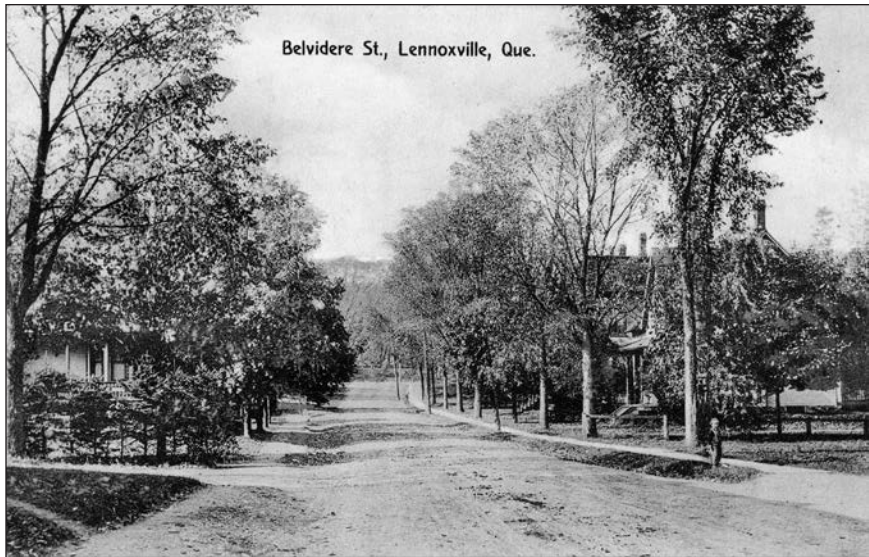


Toboggan slide in  
Sherbrooke, ca. 1910.  
ETRC-P058-010\_010



Canadian Pacific Railway Station in Sherbrooke, ca. 1907. The postcard  
was addressed to Annie Mills in East Angus. ETRC-P058-010\_009



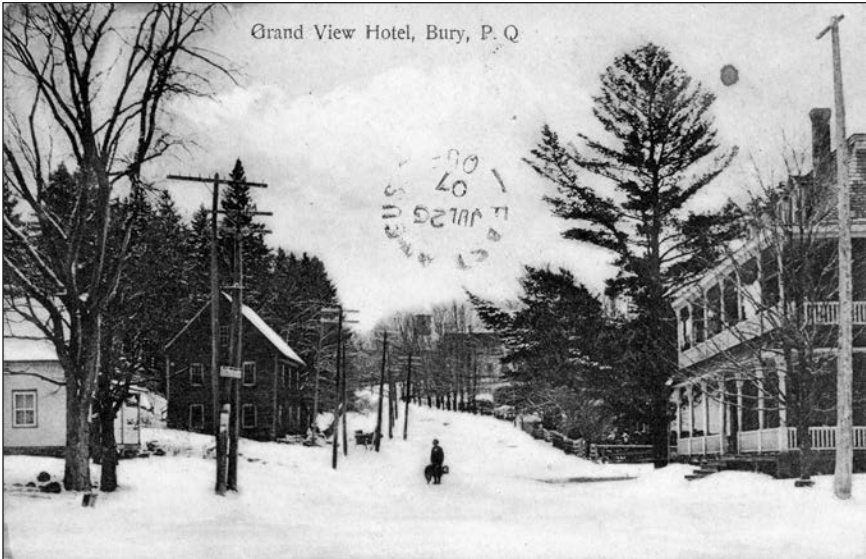


A view of Belvidere Street in Lennoxville, ca. 1909. The postcard was addressed to Annie Mills in East Angus. ETRC-P058-010\_008



The C.I.B.C. bank on Queen Street in Lennoxville, ca. 1925.  
ETRC-P058-010\_007

Compton County



Scene in Bury, including the Grand View Hotel from around 1907.  
The postcard was addressed to Mable Mills in East Angus.  
ETRC-P058-010\_004



View of Brompton Pulp & Paper Company's new dam in East Angus,  
around 1907. ETRC-P058-010\_027